



TRAFFORD COUNCIL

AGENDA PAPERS FOR TRAFFORD COVID-19 PUBLIC ENGAGEMENT BOARD

Date: Wednesday, 3 November 2021

Time: 10.00 am

Place: Virtual Meeting

<https://www.youtube.com/channel/UCjwblOW5x0NSe38sgFU8bKg>

AGENDA	PART I	Pages
1. ATTENDANCES		
To note attendances, including officers, and any apologies for absence.		
2. DECLARATIONS OF INTEREST		
Members to give notice of any interest and the nature of that interest relating to any item on the agenda in accordance with the adopted Code of Conduct.		
3. MINUTES		1 - 4
To receive and, if so determined, to approve as a correct record the Minutes of the meeting held on 20 th October 2021.		
4. UPDATE ON THE CURRENT COVID-19 SITUATION IN TRAFFORD		5 - 18
To receive an update from the Director of Public Health.		
5. 10 POINT PLAN		
(a) Mass Testing		
To receive a verbal update from the Strategic Testing Lead.		
(b) Contact Tracing and Outbreak Management		
To receive a verbal update from a Consultant in Public Health.		
(c) Mass Vaccination		
To receive a verbal update from the Deputy Medical Director, Trafford		

CCG.

(d) **Community Engagement**

To receive a verbal update from the Head of Regulatory Services.

6. **PUBLIC ENGAGEMENT BOARD ACTIVITY**

For all Board Members to provide updates on any activity pertaining to the remit of the Board not covered elsewhere on the agenda.

7. **ANY OTHER BUSINESS**

To consider any other items of business not on the agenda which need to be considered by the Board before the next confirmed meeting.

SARA TODD

Chief Executive

Membership of the Committee

Council Leader or named Elected Member, nominated leads from opposition parties
VCSE representatives – including specialists relating to key population groups (older people; BAME; children; mental health , Learning Difficulties), Partnerships lead, Communications lead, Director of Public Health, Director of Adult Social Services, Director for Children's Services, Neighbourhood representatives, Clinical Commissioning Group representative, Trafford Local Care Organisation representative, Healthwatch Representative

Further Information

For help, advice and information about this meeting please contact:

Fabiola Fuschi,

Tel: 07813 397611

Email: Fabiola.fuschi@trafford.gov.uk

This agenda was issued on **1st November 2021** by the Legal and Democratic Services Section, Trafford Council, Trafford Town Hall; Talbot Road, Stretford, Manchester, M32 0TH

WEBCASTING

This meeting will be filmed for live and / or subsequent broadcast on the Council's website and / or YouTube channel <https://www.youtube.com/user/traffordcouncil>

The whole of the meeting will be filmed, except where there are confidential or exempt items.

If you make a representation to the meeting you will be deemed to have consented to being filmed. By entering the body of the Committee Room you are also consenting to being filmed and to the possible use of those images and sound recordings for

Trafford Covid-19 Public Engagement Board - Wednesday, 3 November 2021

webcasting and/or training purposes. If you do not wish to have your image captured or if you have any queries regarding webcasting of meetings, please contact the Democratic Services Officer on the above contact number or email democratic.services@trafford.gov.uk

Members of the public may also film or record this meeting. Any person wishing to photograph, film or audio-record a public meeting is requested to inform Democratic Services in order that necessary arrangements can be made for the meeting. Please contact the Democratic Services Officer 48 hours in advance of the meeting if you intend to do this or have any other queries.

This page is intentionally left blank

Document Pack Page 1
Trafford Covid-19 Public Engagement Board

Wednesday 20th October 2021 – 10:00 a.m. – Virtual meeting

Present:

Councillor Freeman (Chair)	Executive Member for Covid-19 Recovery and Reform
Councillor Newgrosh	Member of the Health Scrutiny Committee, Trafford Council
Councillor Acton	Chair of the Overview and Scrutiny Committee, Trafford Council
Councillor Blackburn	Ward Councillor, Trafford Council
Councillor Welton	Ward Councillor, Trafford Council
Councillor Cordingley	Member of the Health Scrutiny Committee, Trafford Council
Councillor Lloyd	Member of the Health Scrutiny Committee, Trafford Council
Helen Gollins	Consultant in Public Health, Trafford Council
Ellie Caddick	Covid-19 Communications Lead, Trafford Council
Khan Moghal	Chair, Voice of BME Trafford
Dorothy Evans	Voluntary, African Caribbean Care Group
George Devlin	Lay Member for Patient and Public Participation, Trafford CCG
Rebecca Demaine	Associate Director of Commissioning – Primary Care, Trafford CCG
Nigel Smith	Head of Regulatory Services, Trafford Council
Ben Wilmott	Covid-19 Senior Project Manager, Trafford Council
Catherine Martland	Outbreak and Contact Tracing Hub Officer, Trafford Council
Molly Shaw	Governance Services, Trafford Council
Fabiola Fuschi	Governance Officer, Trafford Council

	Item	Decision / Action	Key Person for Action
1.	Welcome and apologies	Apologies were received from Rebecca Demaine and Kirsty Johnson.	
2.	Minutes	The minutes of the meeting 6 th October 2021 were agreed as an accurate record.	
3.	Membership	There had been no changes to the Membership since the last meeting.	
4.	Update on the current Covid-19 situation in Trafford	<p>The Board agreed to note the update.</p> <p>The following messages were shared with the Board:</p> <ol style="list-style-type: none"> 1. The rates across Trafford were slowly decreasing with rates at 656 per 100,000; 2. Trafford still had the highest rates across Greater Manchester; 3. 0-14 year olds had the highest rates; 4. The rates in over 60s had increased to 257 per 100,000; 5. Positivity rates had declined to 12%; 6. Hospitalisation rates had seen a small but steady increase; 7. That staff and pupils in secondary schools were 	All

		<p>now wearing facemasks in schools again and staff and parents were wearing them in Primary schools;</p> <p>8. People needed to take additional care (even if vaccinated) by avoiding crowded places, meeting people outdoors where possible, wearing a mask, keeping up with hand hygiene, and working from home if able.</p>	
5.	10POINT ACTION PLAN		
5a.	Mass Testing	<p>The Board agreed to note the update.</p> <p>The following messages were shared with the Board:</p> <ol style="list-style-type: none"> 1. There was a new type of Lateral Flow test which was a nasal swab only and had to be administered by adults for children under 14; 2. To encourage people to get PCR tests when experiencing any symptoms of Covid-19; 3. The importance of following the instructions of Lateral Flow tests as there were a variety of tests available which worked in different ways; 4. Testing at home twice weekly with Lateral Flow tests should continue. 	All
5b.	Contact Tracing and Outbreak Management	<p>The Board agreed to note the update.</p> <p>The following messages were shared with the Board:</p> <ol style="list-style-type: none"> 1. The team were working with 10 schools who met the outbreak threshold and carrying out risk assessments; 2. There had been 414 case notifications across schools and only 14 across other settings; 3. The team had followed up 394 Level 2 cases over the past week with 73% contacted. 	All
5c.	Mass Vaccination	<p>The Board agreed to note the update.</p> <p>The following messages were shared with the Board:</p> <ol style="list-style-type: none"> 1. MFT were rolling out the 12-15 year old vaccination programme; 2. Over 2000 children across 10 schools in Trafford had received their vaccination; 3. There was strong encouragement for unvaccinated or partially vaccinated people to get their vaccine. 	All

5d.	Update and escalations from the COVID-19 Community Engagement Group	<p>The Board agreed to note the update.</p> <p>The following messages were shared with the Board:</p> <ol style="list-style-type: none"> 1. The team had been promoting vaccine uptake and cascading Covid-19 secure messaging across the community; 2. Provided targeted support to schools when required; 3. Worked with public health on a vaccination questionnaire to understand reasons around vaccine hesitancy and in particular uncover reasons around second dose hesitancy; <p>Autumn/Winter Plan B:</p> <ol style="list-style-type: none"> 1. The Autumn Winter Plan B outlined the government’s plan to sustain the progress made and prepare the country for future challenges; 2. It focused on ensuring the NHS doesn’t come under unsustainable pressure during the winter period; 3. If the data suggests the NHS will come under unsustainable pressure the Government will: <ol style="list-style-type: none"> a. Communicate to the public clearly and urgently that the level of risk has increased and the need to behave cautiously; b. Introduce mandatory vaccine only Covid-19 certification status in certain settings; c. Legally mandating face coverings in certain settings; d. Consider making working from home mandatory again. 	All
6.	Public Engagement Board Activity and Feedback	None	
7.	Any Other Business	None	
8.	Date of Next Meeting	Wednesday 3 rd November 2021 at 10:00 a.m.	

This page is intentionally left blank

Public Engagement Board

COVID-19 Programme Team

CLT Lead: Helen Gollins, Acting Director Public Health Trafford

27 October 2021

Data surveillance update paper to Public Engagement Board

Report Summary:

This paper provides an update on the current data position for COVID-19 within Trafford and provides comparative information with other GM localities. Data insights into any potential trends are provided based on best available public health information and intelligence available.

Overview of the current position:

Overview

- There were **1118** confirmed cases during the week ending Wednesday 27 October, with the highest number of cases (**211**) reported on **Wednesday 21 October**.
- We have seen a decrease in our 7 days case rate to **471.0/100k** from **601.2/100k** in the previous week. Despite seeing further reductions in our case rate, most recent data suggests our rates are now levelling-off. -Trafford continues to have the highest case rate across GM. Trafford's case rate remains above the North West. Trafford's case rate still remains above the North West (**432.4/100k**) and England (**467.9/100k**) averages.
- Trafford's testing rate has dropped to **716.1/100k** from **765.7/100k** in the previous week with positivity remaining similar at **12.1%** compared to **11.9%** in the previous week.

Age Profiles

- Case rates continue to drop for young persons below the age of 17, but are levelling-off in our adult population.
- Case rates remain highest for 10-14 year olds (at **1227.7/100k**) but have dropped by **40.3%** when compared to the previous week (**2058.1/100k**).
- PCR testing rates are dropping but remain highest for 0-14 year olds.
- Case rates for residents aged 60+ have increased slightly from the previous week. However, rates have increased from the previous week for this age group in Trafford (at **236.8/100k** from **225.5/100k**), however we don't expect much change over the

coming days. Rates are higher among 60-74 year olds (**261.1/100k**) compared to residents 75+ (**125.7/100k**).

Geography

- Case rates have dropped for most wards (**19/21**).
- Case rates are highest for the wards of Hale Barns (**784.4/100k**), Stretford (**668.6/100k**), Broadheath (**662.4/100k**), Altrincham (**613.9/100k**).
- Case rates have increased most for the ward of Stretford (+7.0%) and Broadheath (+9.4%).
- Case rates have decreased most in Trafford: Village (-51.5%) and Bowdon (-44.8%).

Hospital Activity

- There were **185** COVID-19 admissions during the week ending Sunday 17 October compared with **164** COVID-19 admissions during the previous week (Including Manchester University Foundation Trust, Stockport Foundation Trust, and Warrington & Halton Teaching Hospitals Foundation Trust).

Public Health Concern

Trafford's case rate reached the highest in the country on 9th October 2021 after peaking at a rate of **846.8/100k** (for the 7 days up to 09 October), since this time we have seen a steady decline in rates. Early September saw a sharp rise in testing and subsequent positive cases for young persons below the age of 17 that caused a gradual increase in Trafford's case rate throughout the month of September into October.

Trafford's testing rate over the past two weeks has been at its highest since the start of the pandemic, this has allowed effective methods of case findings, particularly for positive cases in educational settings, where Lateral Flow Tests are routinely conducted. The recent surge in cases has been heavily concentrated in the West of the borough and particularly for school age residents.

Our case rates remains high, despite recent data (over the past few days) showing a drop in the number of residents testing positive. Our immediate concern is that we go through further periods of increasing community transmission that spreads into other geographical areas, our care homes and population groups more vulnerable to adverse outcomes of the virus (aged 60+ and/or with preexisting health conditions).

The successful roll-out of COVID-19 vaccination, including booster vaccinations has helped weaken the link between infection and hospital admissions/COVID-19 mortality, however there are still 1/4 of eligible residents not vaccinated with at least 1 dose. Despite the successful roll out of the vaccine programme, we have seen inequalities in uptake, specifically linked to decreasing age and geographical areas with highest levels of deprivation. Vaccines offer protection but risk of infection is still present if borough-wide transmission is not controlled.

Although rates are declining, we recognise that must not be complacent as a borough and we will continue to focus our efforts on reinforcing COVID-19 secure measures. We will continue to support areas with lower uptake of vaccinations (especially in over 60s) for preventative measures and to improve vaccination uptake.

Outbreak Management and Risk Reduction

Business settings

- We continue to urge all businesses to make their workplaces COVID-19 secure, including ensuring that staff are routinely testing and properly protected when they return to the workplace.
- We continue to promote the importance of COVID-19 vaccinations for all eligible populations.
- We are monitoring the impact of events on COVID-19 rates in the borough.

Health & Social Care Settings

- We need to work together to keep our most vulnerable populations protected. We are managing outbreaks in care homes. While some fully vaccinated staff and residents are testing positive, their disease is much milder than in unvaccinated people.
- Vaccination remains a safe and effective method of protecting yourself from severe illness.
- We will be encouraging all health and social care settings to continue to use all the current infection prevention and control measures to keep staff and service users safe.
- Trafford have recommended that providers pause indoor visiting by children and young people aged 16 and under. Exceptions include end of life visits, and visits that include outdoor socially distanced visits. This enhanced measure was reviewed on 1/11 and the recommendation is that it continue for a further two weeks.

Education & Early Years Settings

- Secondary school pupils should continue with twice weekly LFD testing and all staff/pupils should wear face coverings in communal areas.
- Any children identified as a close contact should have a PCR test. The Outbreak Team has developed and shared a suite of resources with settings to support them.
- School household contacts; children and young people and staff who attend/work in schools and are household contacts should do daily LFD testing for a period of 10 days
- We are continuing to monitor numbers of cases reported through from Early Years settings, fortunately numbers are low, but we would continue to promote vaccination and routine LFD testing.

Contact Officer:

Name: Tom Seery, Public Health Data Surveillance Analyst

Tel: 07929876642

Email: Thomas.seery@trafford.gov.uk

1.0 Vulnerable Population groups

1.1 We have seen case rates increase slightly in our 60+ population over that the past 7 days, however we do not to see much change over the coming days.

1.2 Table 1 shows that 60+ case rates are highest for the West of the borough but have reduced by 4.8% and are lowest for the South locality. Central locality has seen the largest increase of 20.7%

Table 1. Case count and incidence per 100,000 population by ethnicity

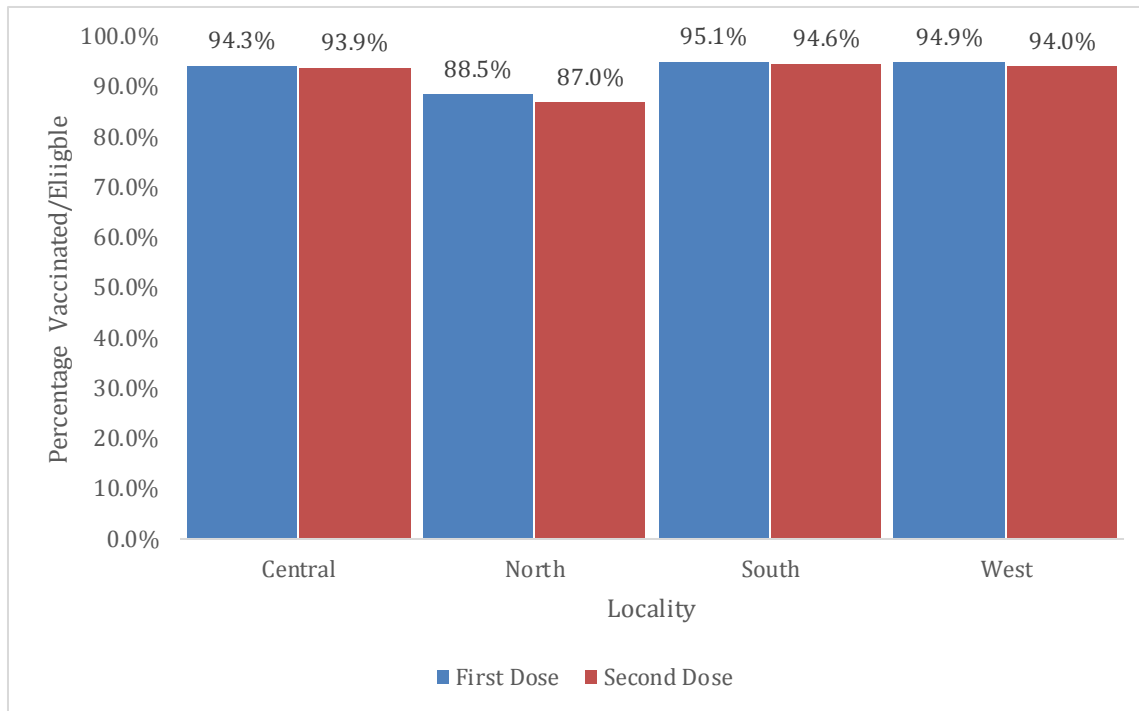
Trafford, 01 December to 27 October 2021

	Previous Week	Current Week	Percentage Change
West	390.3	294.6	-4.8
Central	191.9	268.6	20.7
North	248.0	212.6	-5.3
South	221.9	201.2	-11.4

1.3 Vaccine uptake (first dose and both doses) is high among our 60+ population, however we are seeing variation between our 4 localities.

1.4 Between localities with the highest and lowest uptake, we are seeing a percentage gap of 6.5 for first dose uptake, and 7.6 for second dose uptake.

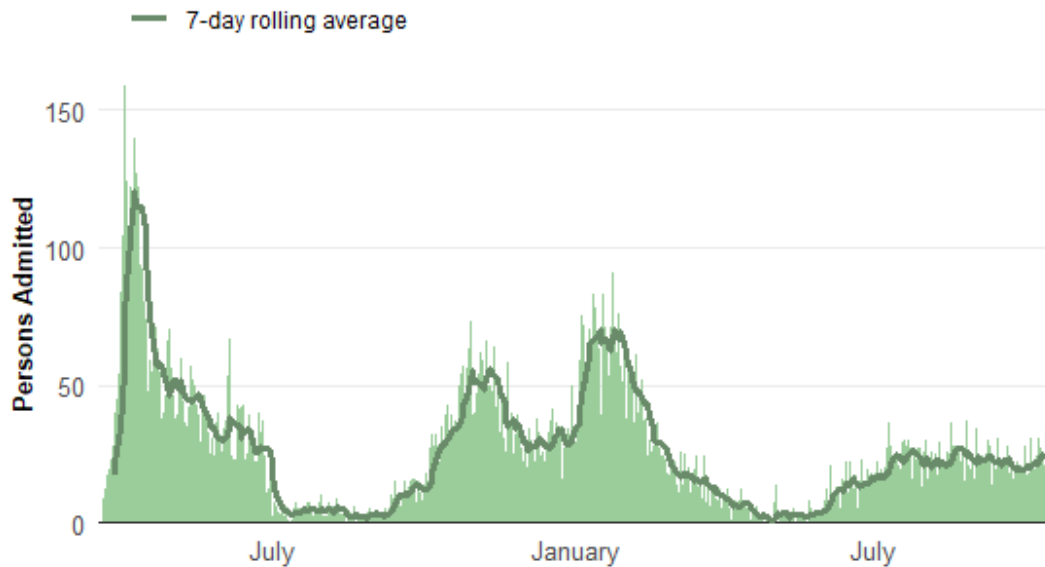
Figure 1. First and Second dose uptake for residents aged 60 years and over Trafford, up to 11 October 2021



1.5 COVID-19 hospital admissions have increased over the past 3 weeks, however there has been little change in the number of residents (not specific to Trafford residents) admitted to the 3 specified GM hospitals since late July.

1.6 The most recent three weeks (up to October 24th) shows a slight increase in the number of hospital admissions, so we will continue to monitor any week-by-week changes.

Figure 2. Daily Count of COVID-19 Hospital Admissions (including *Manchester University Foundation Trust, Stockport Foundation Trust, and Warrington & Halton Teaching Hospitals Foundation Trust*).
19 March 2020 to 24 October 2021



Source: PHE Coronavirus Dashboard

2.0 Trend of COVID-19 cases within Trafford

2.1 Mid-July saw a sharp reduction in Trafford's case rate, dropping below **300/100k** with less than 100 daily cases being recorded for every 7-day period.

2.2 Case rates remained volatile throughout the month of August and early September, but we started to see a steady rise in cases after mid-September.

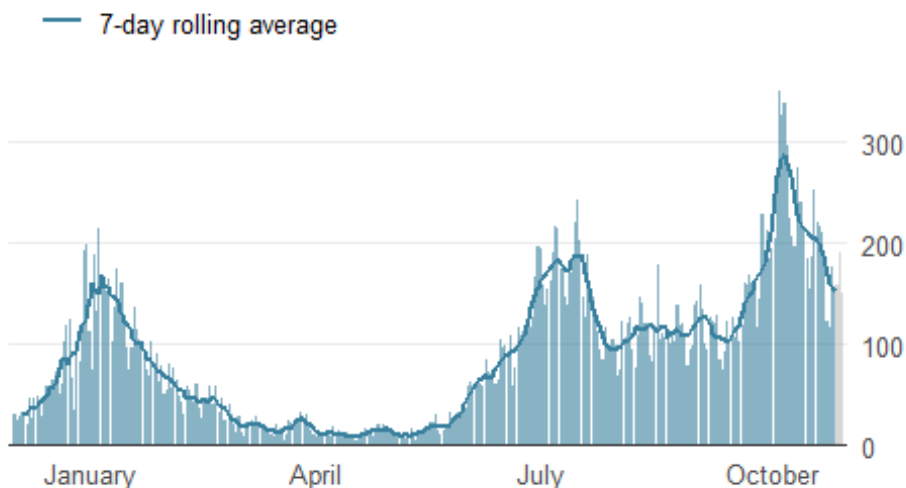
2.3 From October 4th, we began to record more than **300** daily cases on 3 consecutive days.

2.4 Our case rate peaked at a rate of **846.8/100k** for the 7 days up to October 9th, and reached highest in the country.

2.5 The most recent 4 days (up to October 27th) shows a reduction in the number of daily cases, however our case rate still remains high, above a rate of **400/100k**.

Figure 3. Epidemic curve of daily confirmed new cases

Trafford, 01 December to 29 October 2021



Age profiles

3.1 We have started to see the case rates reduce and the number of daily cases are starting to drop for most age groups.

3.2 The biggest reduction when compared to the previous week has occurred in 0-14 year olds (**21.6%**).

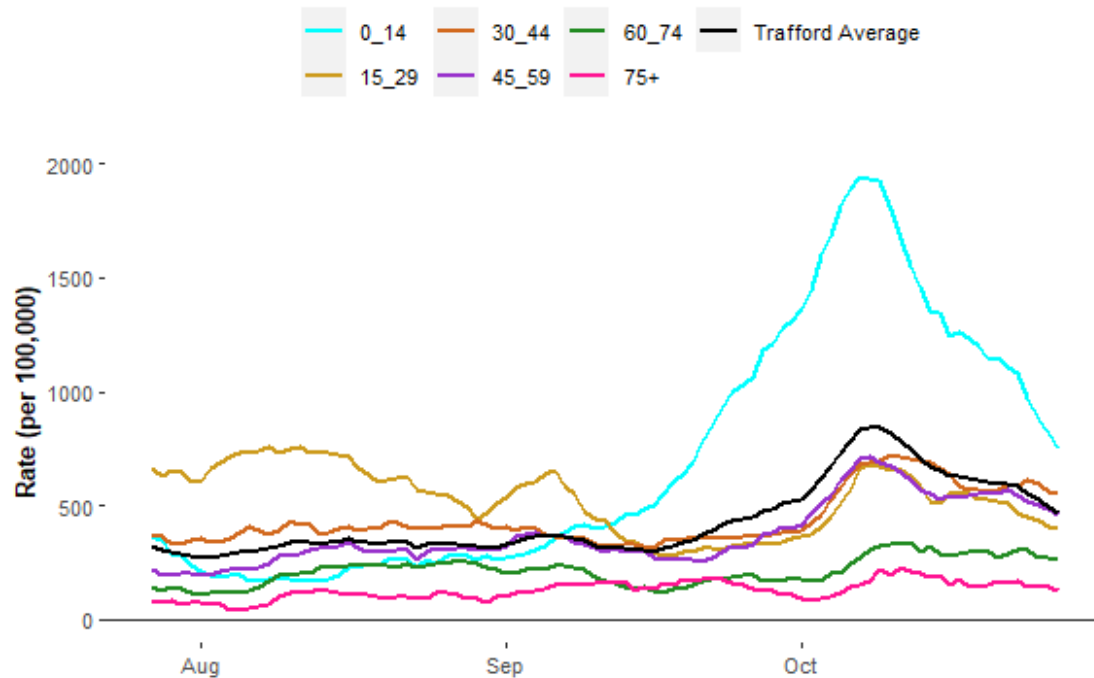
3.3 Case rates remain highest for 0-14 year olds (at **750.5/100k** from **1144.6/100k** in the previous week), followed by 30-44 year olds (at **551.8/100k** from **557.9/100k** in the previous week).

3.4 We are starting to see a slight increase in the number of those over 60 years of age testing positive as rates have increased from the previous week (at **238.8/100k** from **225.5/100k** in the previous week).

3.5 Case rates are higher for 60-74 year olds (**261.1/100k**) when compared to residents aged 70+ (**125.7/100k**).

Figure 4. Age-specific case rates per 100,000 population Trafford, 7-day moving average)

Trafford, 22 July 2021 – 27 October 2021

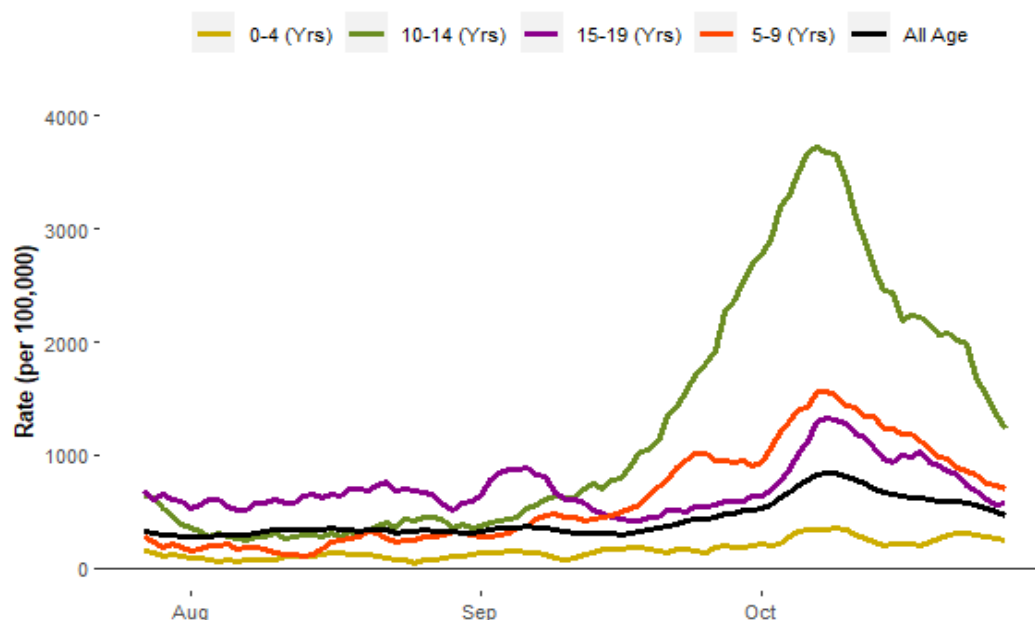


3.6 Case rates are dropping for all young persons below the age of 20.

3.7 Case rates remain highest for 10-14 year olds (**1227.7/100k**) but have dropped most (**40.3%**) for this age group during the most recent week.

3.8 Case rates are also dropping for 5-9 and 15-19 year olds, however are still above the Trafford average.

Figure 5. School case rate per 100,000 residents (7-day moving)
 Trafford, 22 July to 27 October 2021



4.0 Geographical spread of COVID-19 in Trafford

4.1 Case rates remain highest in the South of the borough and are lowest for Trafford North.

4.2 Rates have dropped for **19** wards, and have increased for **2** wards.

4.3 Case rates are highest for the wards of Hale Barns (**784.4/100k**), Stretford (**668.6/100k**), Broadheath(**662.4/100k**), Altrincham (**613.9/100k**).

4.4 Case rates have increased most for the ward of Stretford (+7.0%) and Broadheath (+9.4%) during the most recent week.

4.5 Case rates have decreased most for Village (-51.5%) and Bowdon (-44.8%) during the most recent week.

5.0 PCR Testing

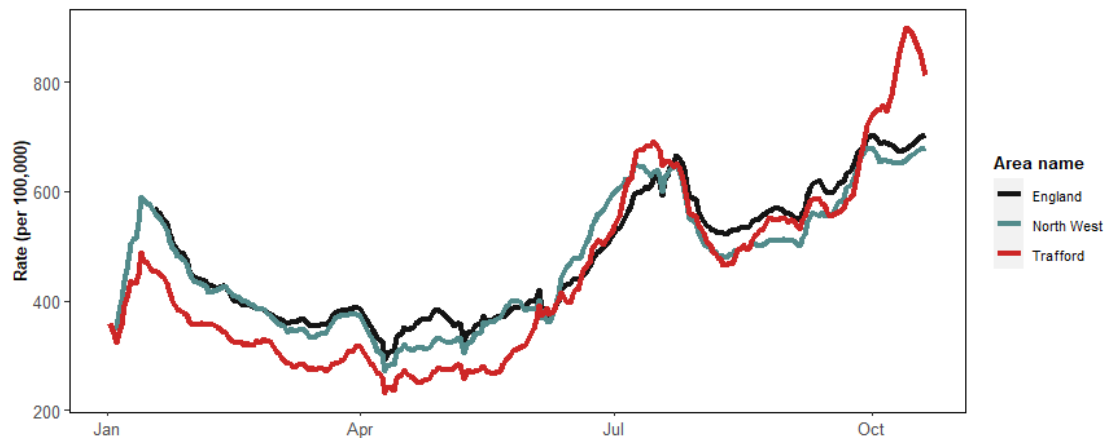
5.1 We were seeing a sharp increase in Trafford's testing rate since late September, spiking above the North West and England averages, carrying out **900** daily tests per 100,000 residents at its peak on October 10th.

5.2 Most recent data shows signs that testing rates are starting to level-off, whilst testing rates for England and the North West are starting to increase.

5.3 We continue to see lowest testing rates in Trafford North.

5.4 As of October 27, Trafford's daily testing rate sits at **751.5/100k** which is a decrease from the previous week (**765.7/100k**). Trafford's positivity rate is above to the north west (**432.4/100k**) and England average (**467.9/100k**).

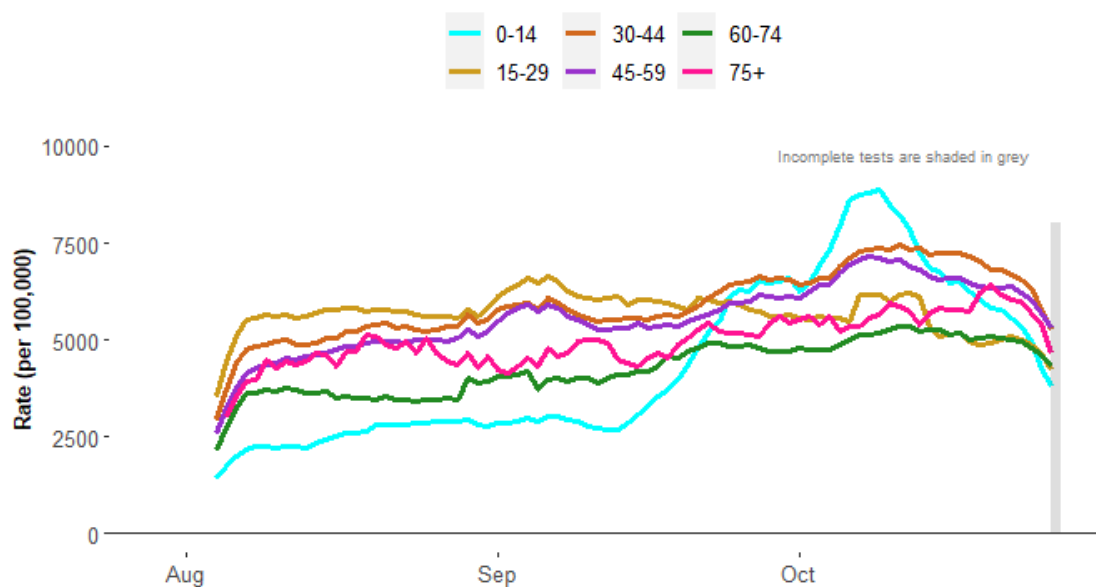
Figure 6. Daily testing rate (7-day average): England, North West, & Trafford
Trafford, 01 January to 27 October 2021



5.5 Testing rates had been lowest for 0-14 year olds throughout the month of August, however we saw a spike in testing (potentially linked to surge in cases for our school age population) in mid-July, carrying on into the month of October and highest amongst all the age groups.

5.6 Most recent data is starting to show a drop in testing rates for all age groups.

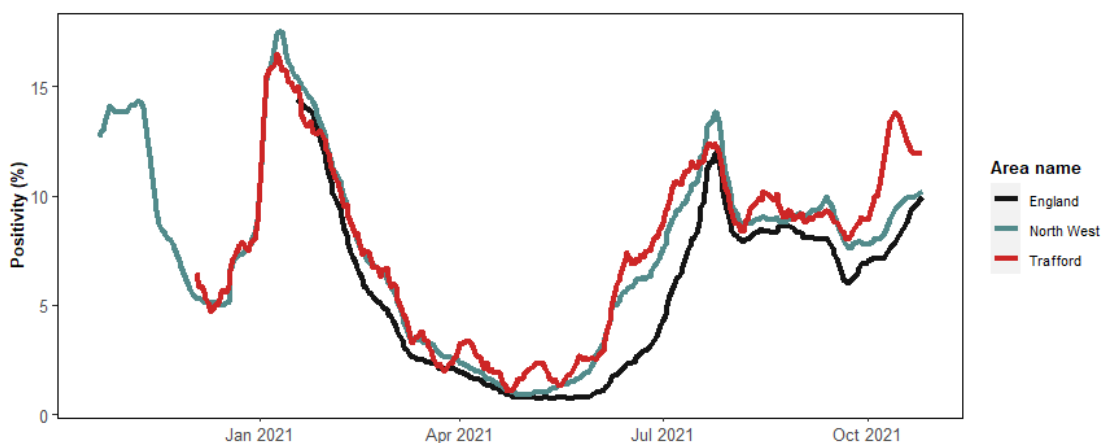
Figure 7. Age-Specific Testing rate per 100,000 residents (7-day moving)
 Trafford, 15 July to 27 October 2021



6.0 Positivity

6.1 Positivity rates follow a similar trend to PCR testing rates. We saw a spike in Trafford's positivity rate in late September, reaching as high as **13.8%** on October 09th, however more recent data shows that positivity rates may be dropping. 6.2 As of October, Trafford's 7-day positivity rate sits at **12.1%** which is an increase from the previous week (**11.9%**). Trafford's positivity rate is above the England average (**9.9%**).

Figure 8. 7-day Positivity rate: England, North West, & Trafford
 Trafford, 01 January to 27 October 2021



7.0 Comparative data of COVID-19 cases within the local authorities of Greater Manchester

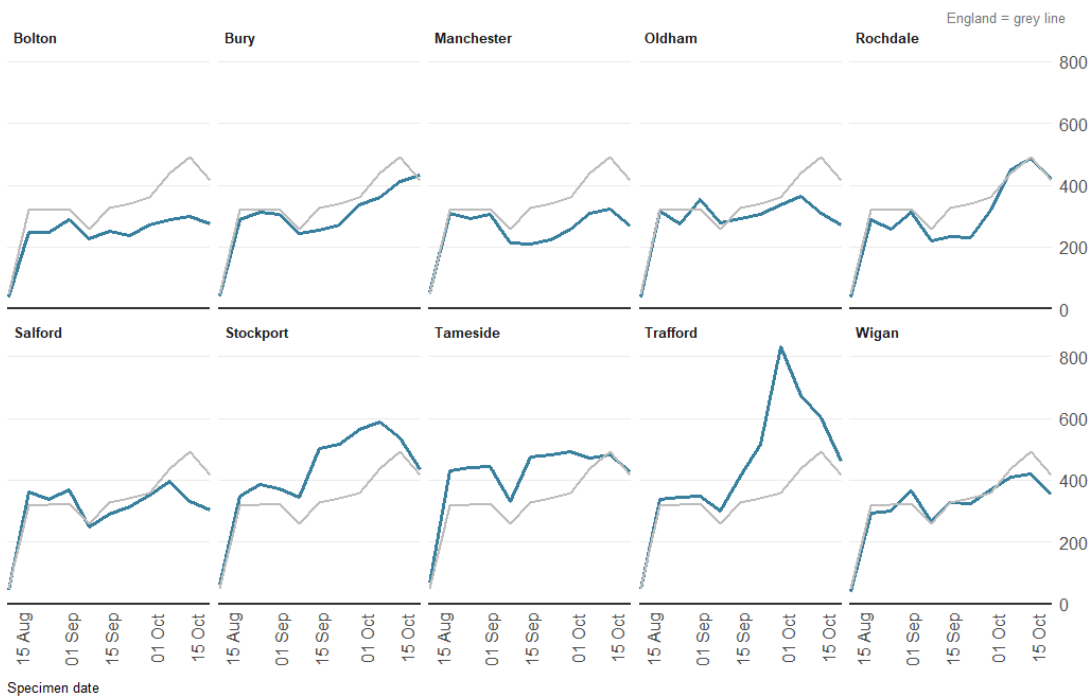
7.1 Some GM boroughs (Trafford included) started to see a slight rate increase during the second week of August, however those rates started to stabilise.

7.2 Most GM boroughs started to see a slight rate increase during September, however Trafford's case rate continued to rise throughout the whole month and saw even further increases during the beginning of October.

7.3 We are starting to see a reduction in Trafford's case rate, although still highest across the ten GM boroughs.

7.4 All other GM boroughs apart from Bury are seeing a fall in cases.

Figure 9. Weekly incidence per 100,000 population by local authority Greater Manchester, 07 August to 27 October 2021



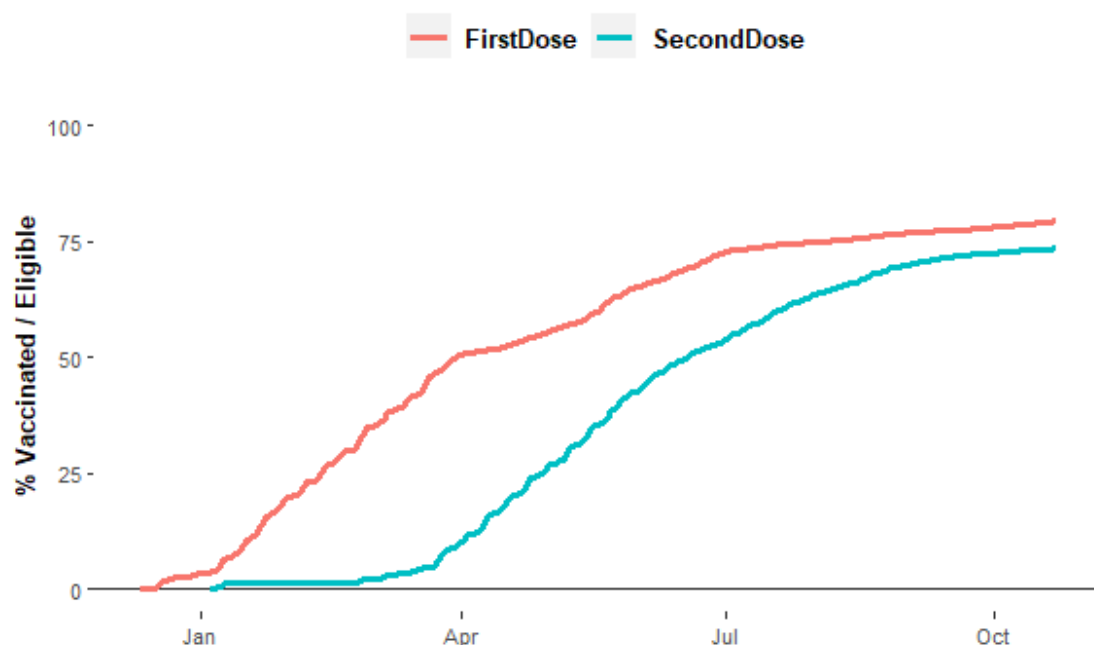
8.0 Vaccinations

8.1 The total percentage of Trafford residents (Aged 12+) administered their first vaccine dose on **Saturday 23-10-2021** was **79.4%**.

8.2 The total percentage of Trafford residents (Aged 12+) administered both vaccine doses on **Saturday 23-10-2021** was **73.5%**.

Figure 10. Running total of first and second dose vaccines for Trafford residents (12 years and above)

Trafford, 09 December to 30 October 2021



Source: COVID-19 Situational Awareness Explorer

8.3 Vaccine uptake is lowest In Trafford North and highest for Trafford South.

This page is intentionally left blank